

Shpella ne Alpet Shqiptare

¹KUJTIM ONUZI, ²Martin BARNICOTT, SHERAZI KASTRATI , ANDREA JAKOVA ³

¹INSTITUTI GJEOSHKENCAVE,, RRUGA DON BOSKO, NO.60, TIRANE, ALBANIA, ENERGJISE, UJIT DHE MJEDISIT

E-MAIL: KONUZI@YAHOO.COM

²AAV RR.ANDON ZAKO ÇAJUPI, ND.9.H.17, AP.1.(NR.5, 1019),TIRANE,ALBANIA

E-MAIL:ONUZI@YAHOO.DE, WWW.AAVALBANIA.ORG

Shpella ne Alpet Shqiptare



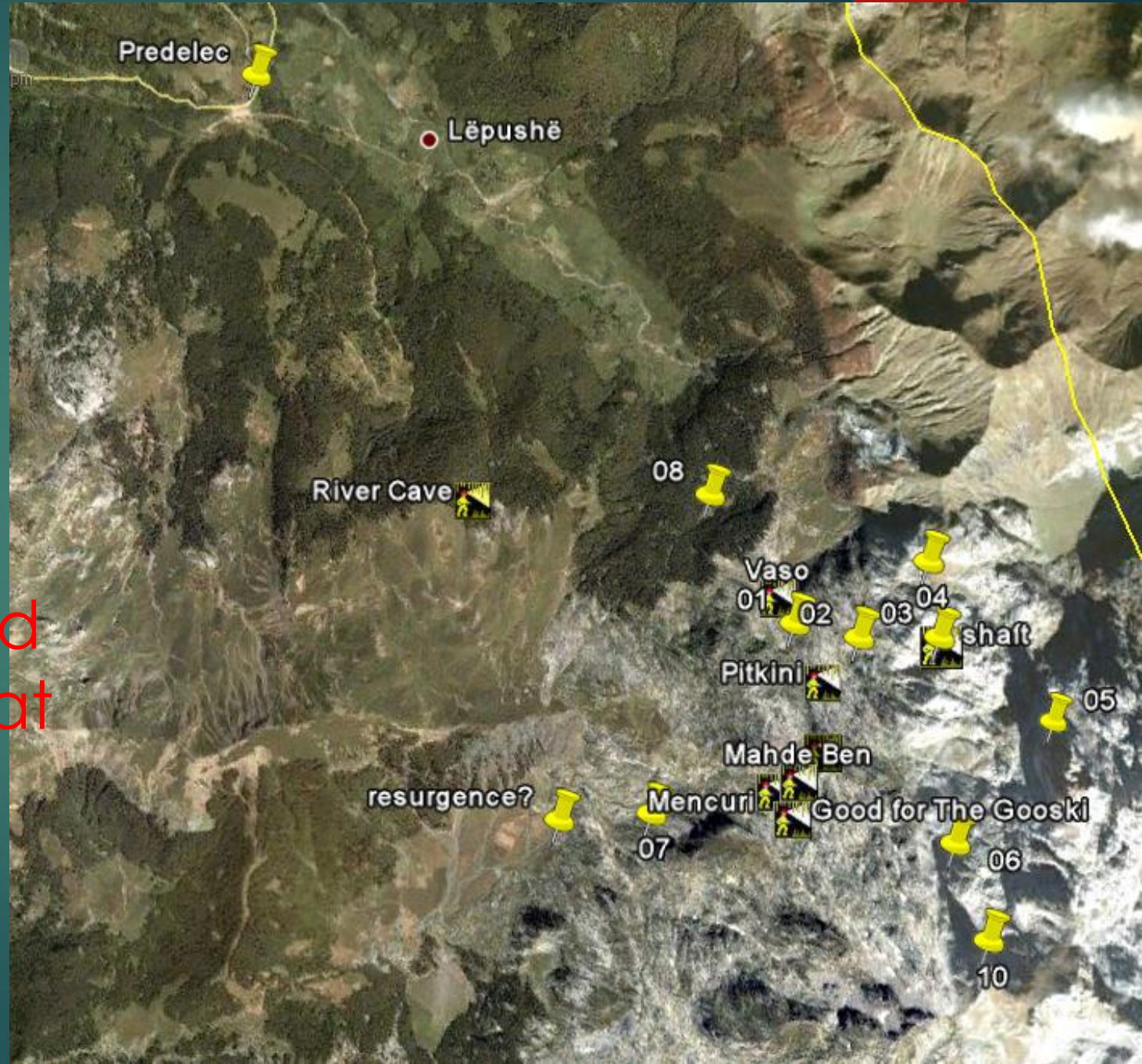
- ¹KUJTIM ONUZI, ²SHERAZI KASTRATI , ANDREA JAKOVA ³
- ¹Instituti Gjeoshkencave, Energjise, Ujit dhe Mjedisit, Rruga Don Bosko, no.60, Tirane, Albania,
- e-mail: konuzi@yahoo.com
- ²AAV Rr.Andon Zako Çajupi, Nd.9, H.17, Ap.1. (Nr.5, 1019). Tirane, Albania
- E.mail: onuzikujtim@yahoo.de , www.aavalbania.org

Shpella Pitkini

-90m deep.

-Originally discovered in 2009.

-Strong draught at the end but too tight to continue at the moment.



"Shepella Pitkini"

5m

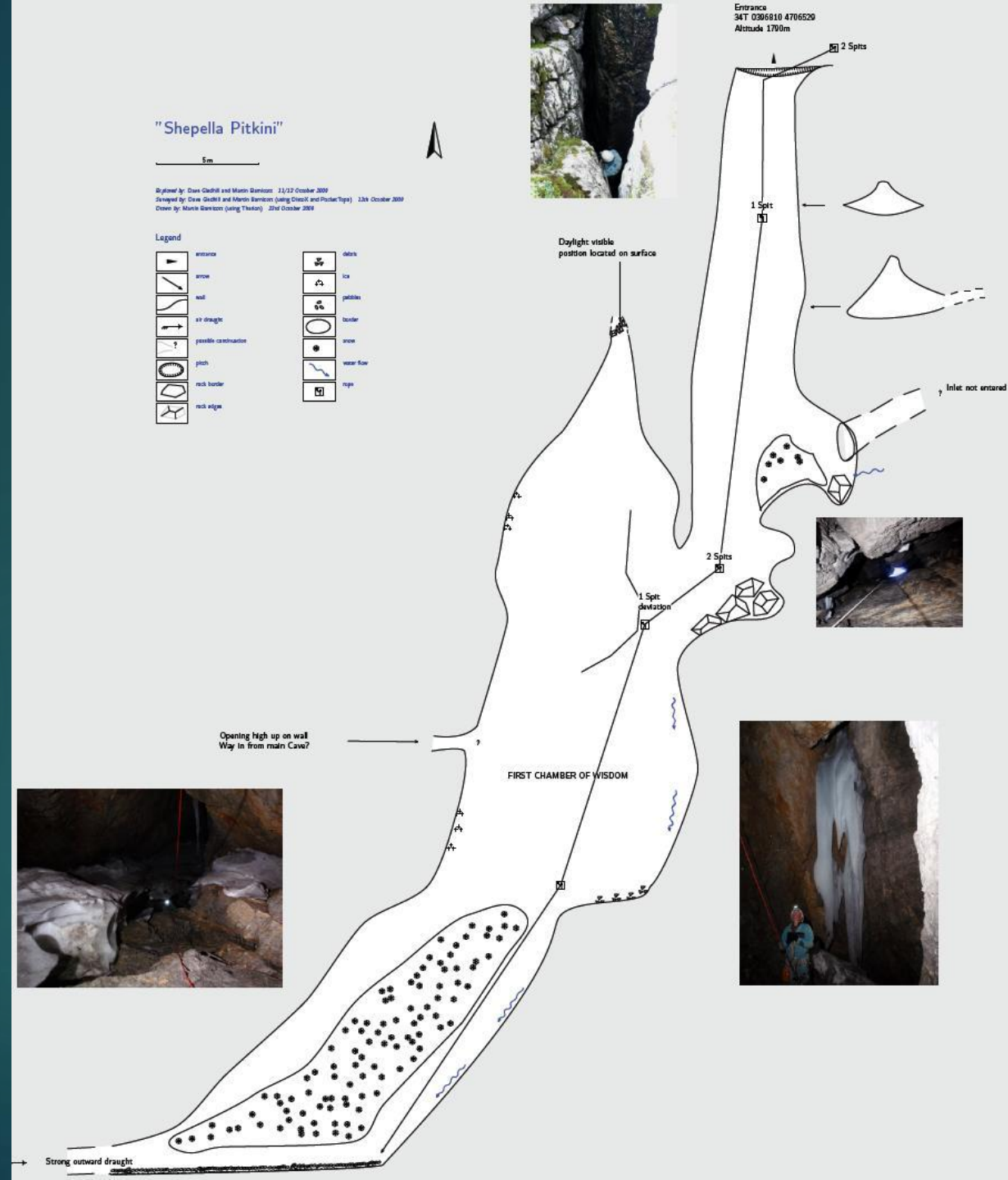
Designed by: Dave Cudhill and Martin Gammon: 11/12 October 2009
 Revisited by: Dave Cudhill and Martin Gammon (using DistoX and Proctor Taps): 13th October 2009
 Drawn by: Martin Gammon (using TheSurveyor): 22nd October 2009

Legend

	entrance		detail
	stone		ice
	wall		pebbles
	air draught		boulder
	possible continuation		stone
	pitch		water flow
	rock border		rope
	rock edge		



Entrance
 34T 0306810 4706520
 Altitude 1700m



Shpella Pitkini

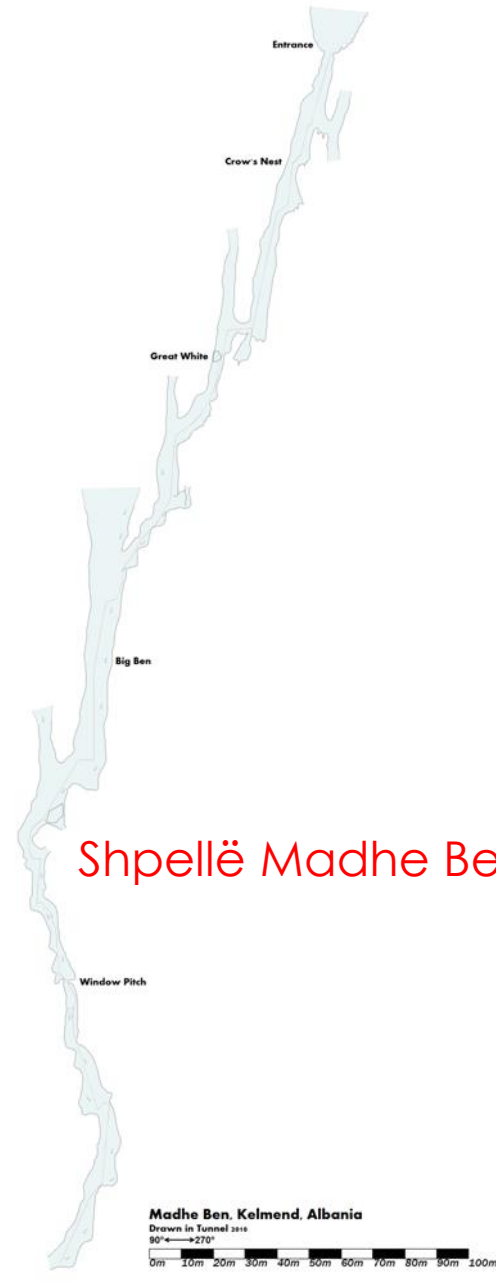




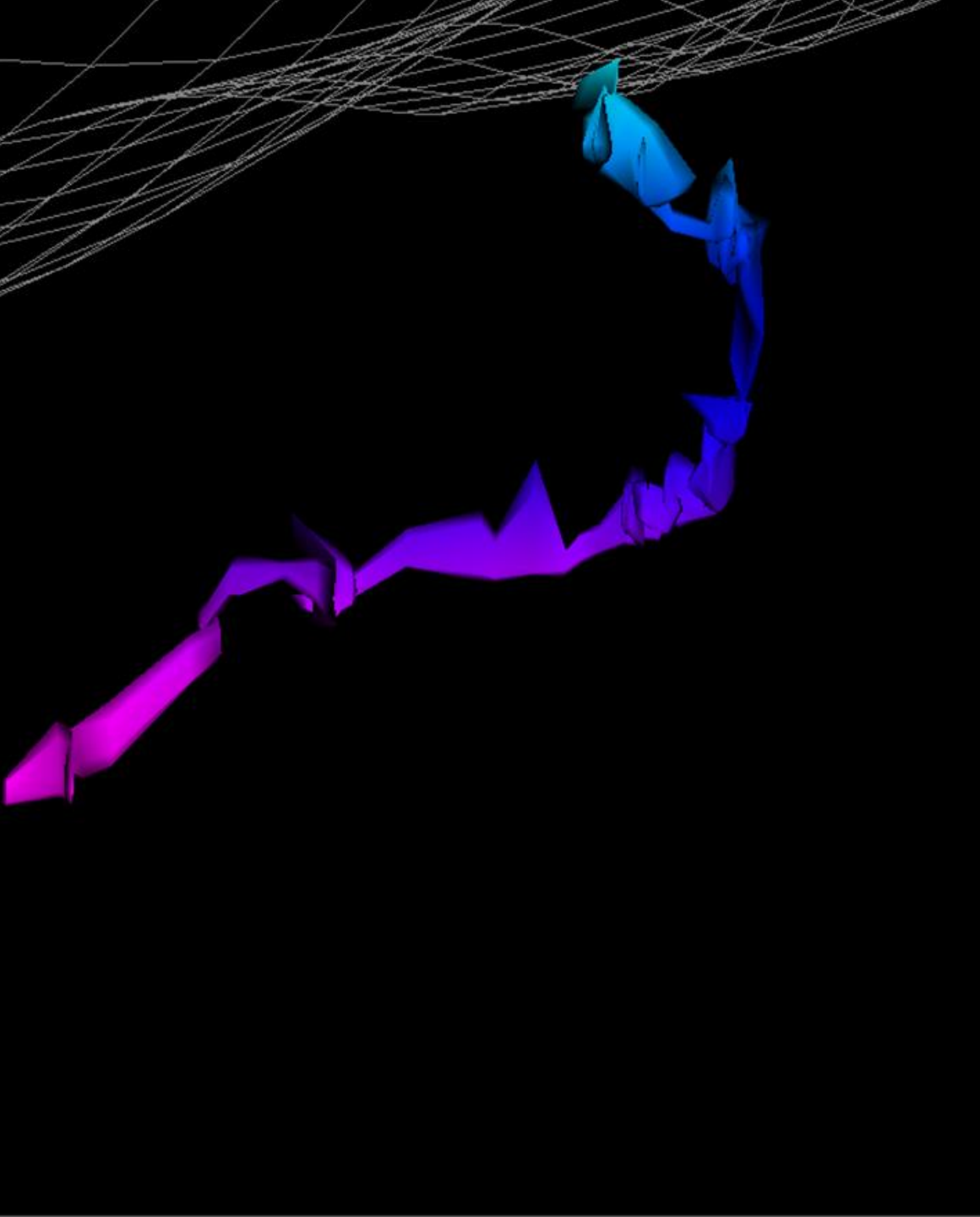








Shpellë Madhe Ben





KOMUNA KELMEND
"LOGU I BJESHKEVE"
13 GUSHT 2011

